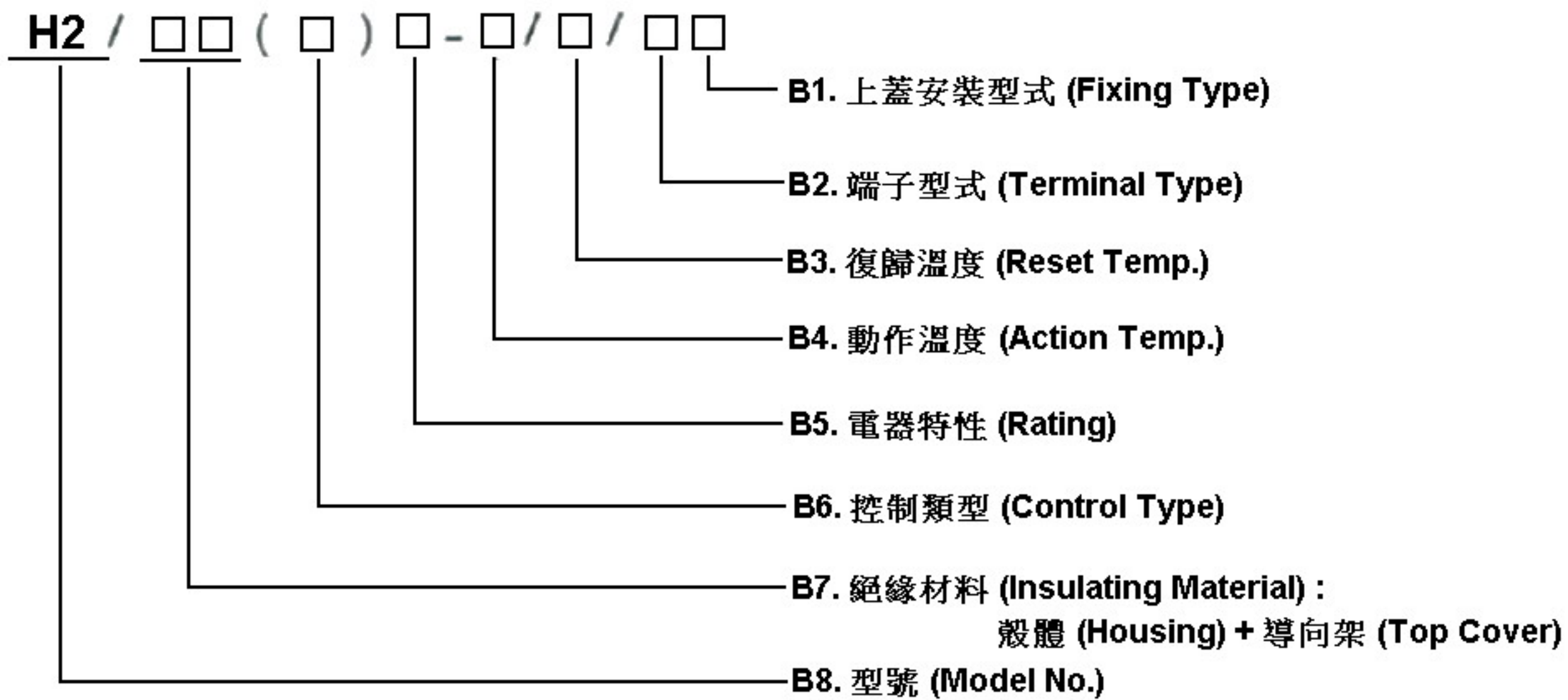




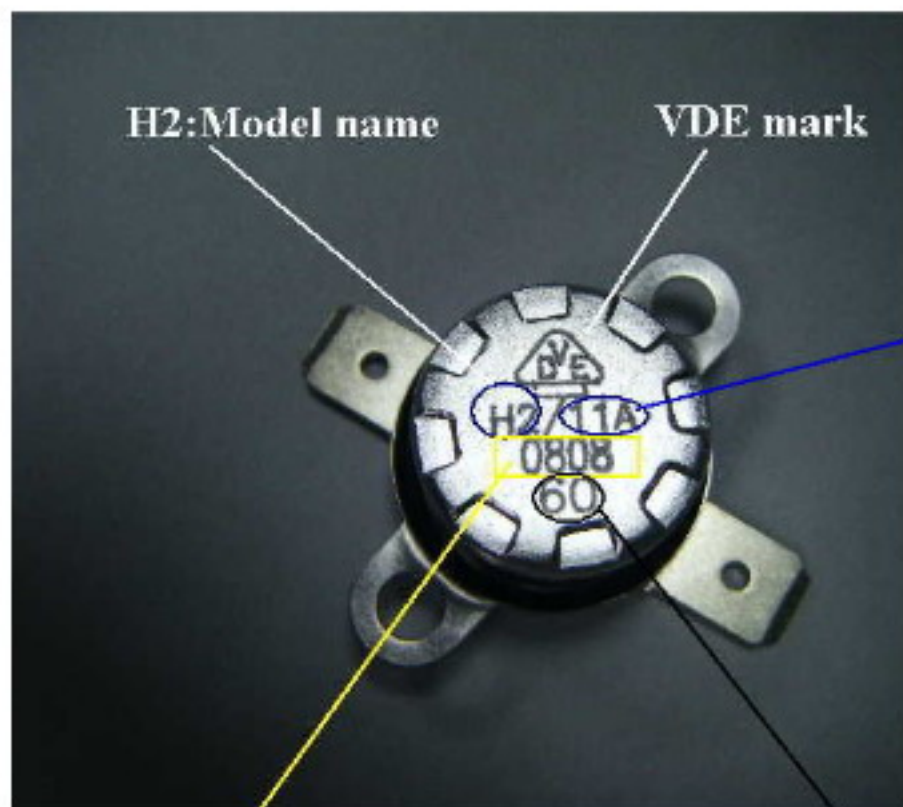
A. Specification

- Electrical Rating : 15A 125V AC (Resistive Load)
10A 250V AC (Resistive Load)
16A 250V AC(Resistive Load)
- Operating Temp : 0 ~ 180°C
- Differential : 10~30K (15K Standard)
- Temp. Tolerance : Operating Temp.±3K±5K
- Heat Durability : 180°C Max.(Ceramic)
- Circuit Resistance : 50mΩ Max.
- Insulation Resistance : 100MΩ Min.at DC 500V
- Dielectric Strength : AC 1000V for One Minute.
or AC 1800V for One Second.
- Operating Life : 100000 Cycles (16A 125V/10A 250V AC)
50000Cycles (10A 250V AC)
- Weight:5.2g max.

B. 編碼 (Code Definition)



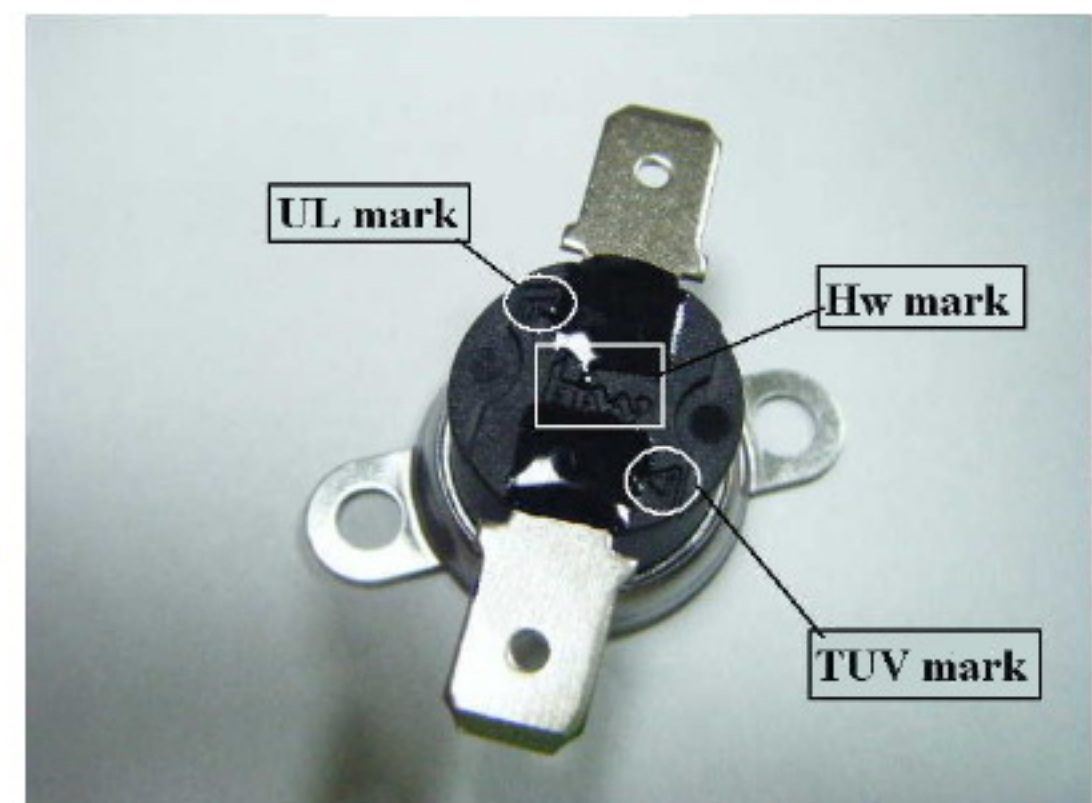
C. 圖例 (Legend)



11:Phenolic case
33: Ceramic case
A:NC(Normally Close)
B:NO(Normally Open)
M:Manual type

Date Code: Year-Month
(0808 : 2008, Aug.)

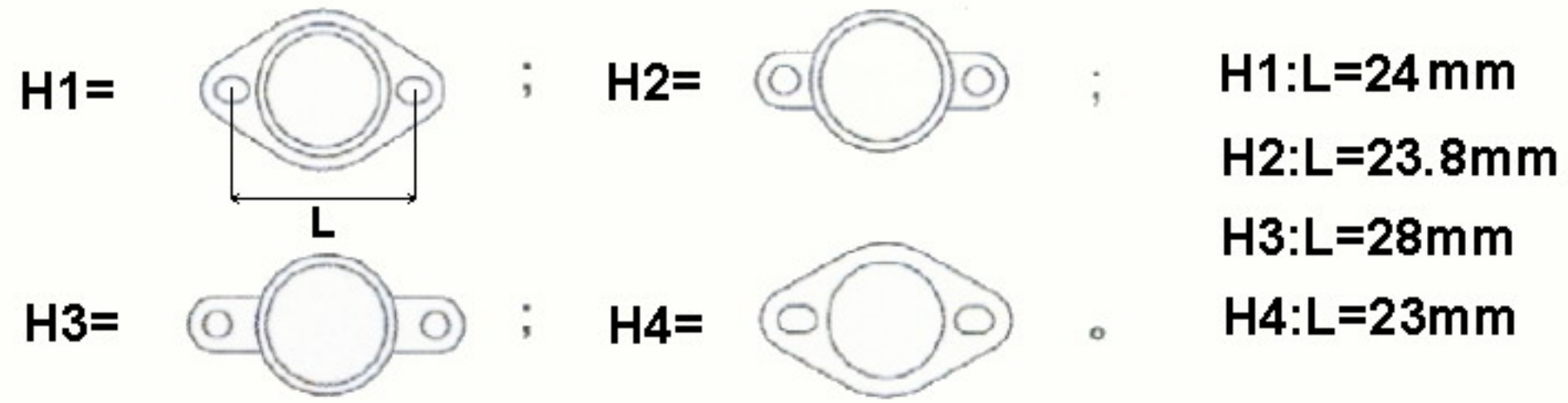
Action Temp.



B1.上蓋安裝型式 (Fixing Type)



活動支架型式 - 均為不鏽鋼材質 (Type of Loose Bracket- Stainless Steel)

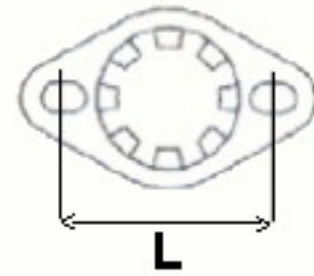


上蓋材料 (Material of Cap):

- 1.-防鏽鋁 (Aluminum Alloy) ; 2.-不鏽鋼 (Stainless Steel) ;
- 3.-銅 (Copper) .

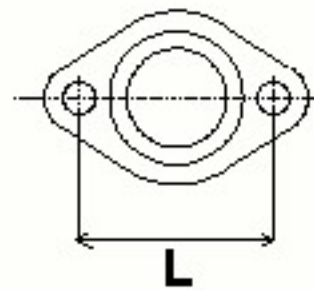
上蓋型式 (Type of Cap) :

A型 : 固定支架-均為鋁質 (Fix Bracket Cap - Aluminum material)



: A1:L=22.3mm , A2:L=23mm , A3:L=24mm ,
 A4:L=25mm , A5:L=28mm .

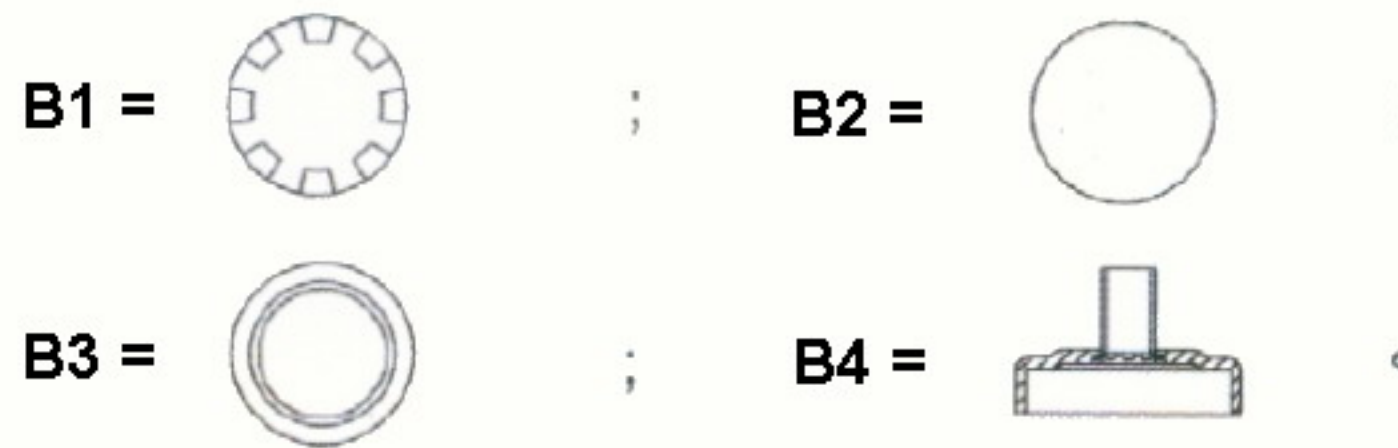
A22型 : 固定支架-不鏽鋼材質 (Fix Bracket cap - Stainless Steel)



: A22: L=23.8mm

B型 : B1,B2,B3 均為鋁蓋, B4有銅鋁兩種.

(B1,B2,B3 all are Al. Cap ; B4 has Copper and Al. material.)



C型 : C1 = C1- 鋁蓋,直徑有18mm 和 20mm
 (C1- Al cap, Diameter - 18mm and 20mm)

C2 = C2- 不鏽鋼蓋,直徑 20mm
 (C2- Stainless Steel cap, Diameter - 20mm)

B2. 端子型式 (Terminal Type)



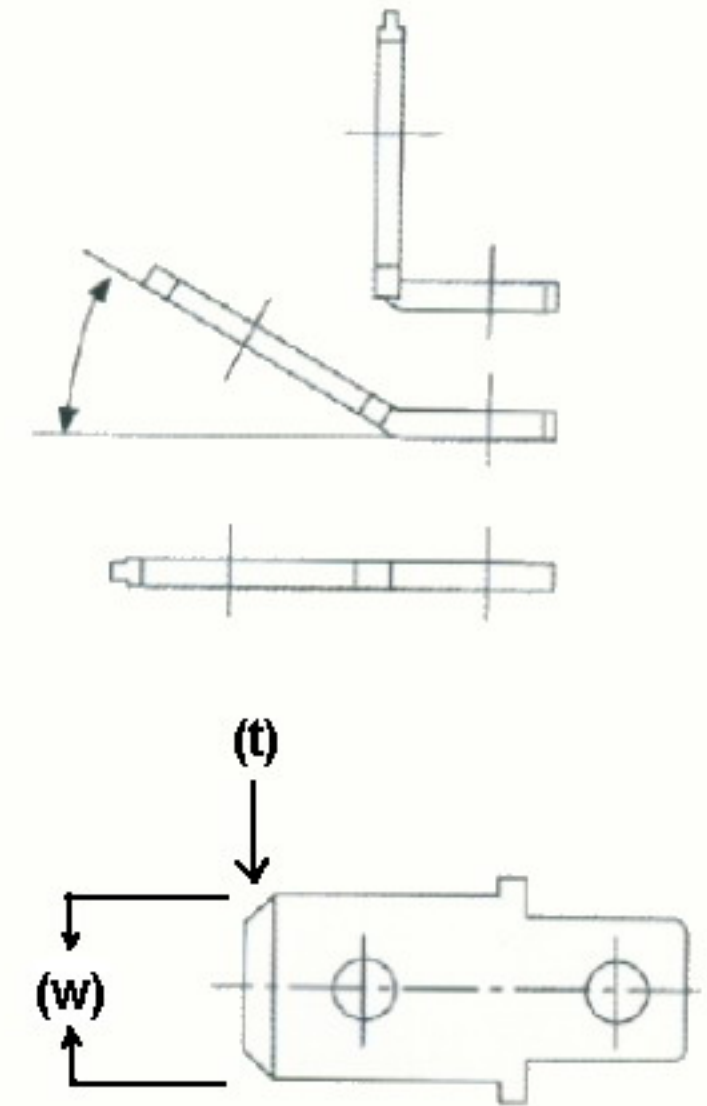
端子材料(Terminal Material):

- 1.-銅鍍鎳(Nickel Plated Brass)
- 2.-黃銅(Brass)
- 3.-銅鍍銀(Silver Plated Brass)
- 4.-不鏽鋼(Stainless Steel)
- 5.-銅鍍錫(Tin Plated Brass)

端子角度 (Angle) : 1 - 90° , 2 - 0° ,
3 - 30° , 4 - 45° ,
5 - 60° .

端子尺寸 (Size):

- 1 - 6.3 (w) x 0.8 mm(t) (0.250x0.031 ")
- 2 - 4.8 (w) x 0.5 mm(t) (0.187x0.019 ")
- 3 - 4.8 (w) x 0.8 mm(t) (0.187x0.031 ")
- 4 - 6.3 (w) x 0.5 mm(t) (0.250x0.019 ")



B3.&B4. 復歸/動作 (Reset/Action)

復歸溫度 (Reset Temp.) ; 動作溫度 (Action Temp.)

公差 (Tolerance)

Grade	A	*B
Action \pm °C	3	5
Reset \pm °C	4	8

• The Grade of Temp. Tolerance is "A", When The Operating Temp. is Less Than 105°C.

• The Grade of Temp. Tolerance is "B", When The Operating Temp. is Over 106°C.

B5. 電氣特性 (Rating)

A - 250V / 10A ; B - 250V / 7.5A ; C - 125V / 10A
D - 250V / 5A ; E - 125V / 15A ; F - 250V / 15A

B6. 控制類型 (Control Type)

- 不標示 : 常閉型(升溫斷開,降溫閉合)

Default : Contact opens when Temperature rises to set point (Normally Closed)



- K : 常開型(升溫閉合,降溫斷開)

K : Contact closes when Temperature rises to set point (Normally Open)



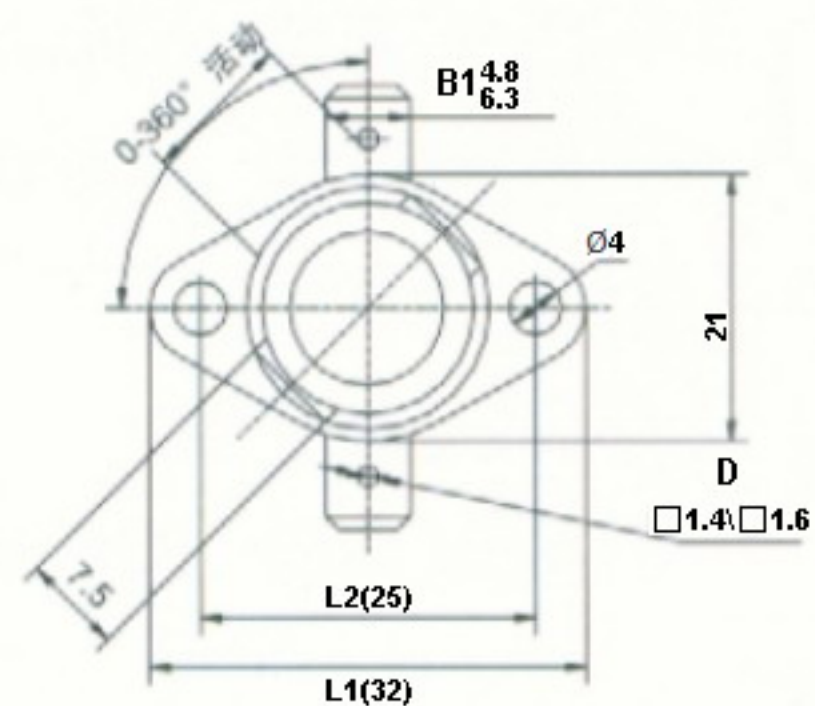
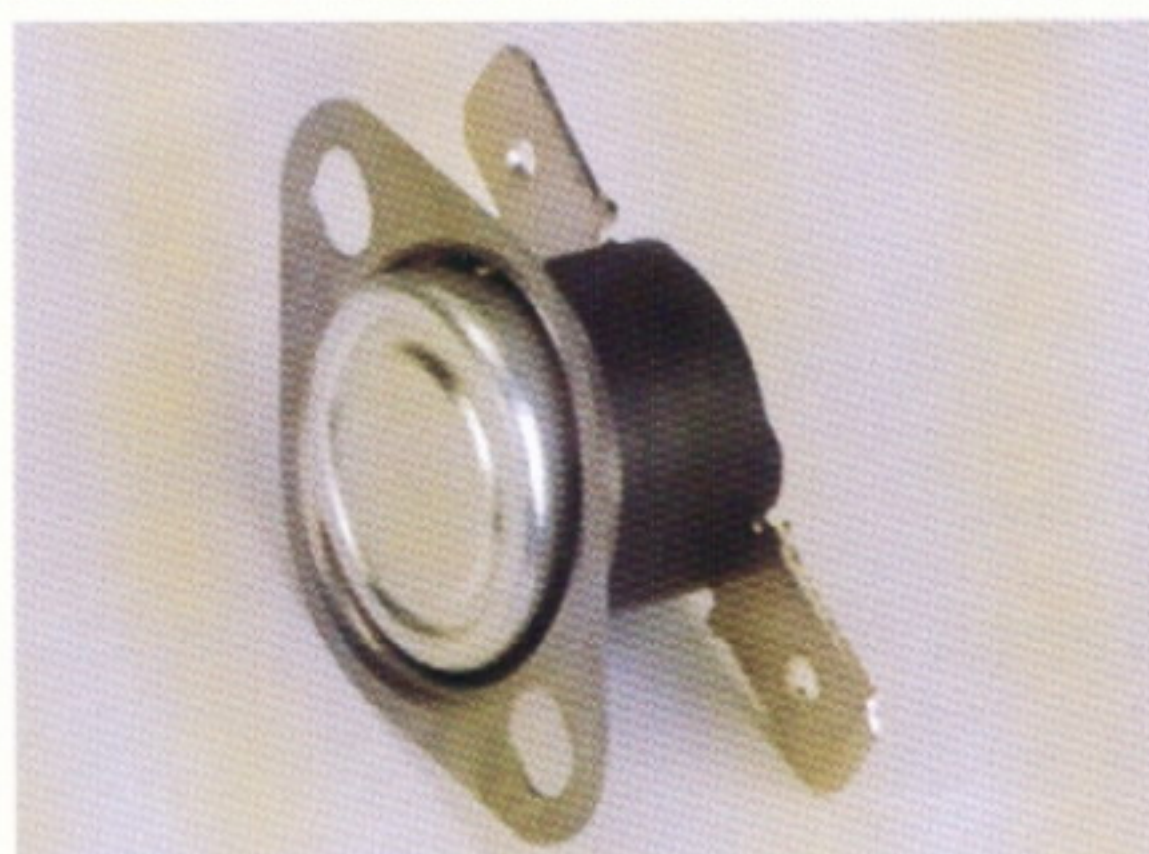
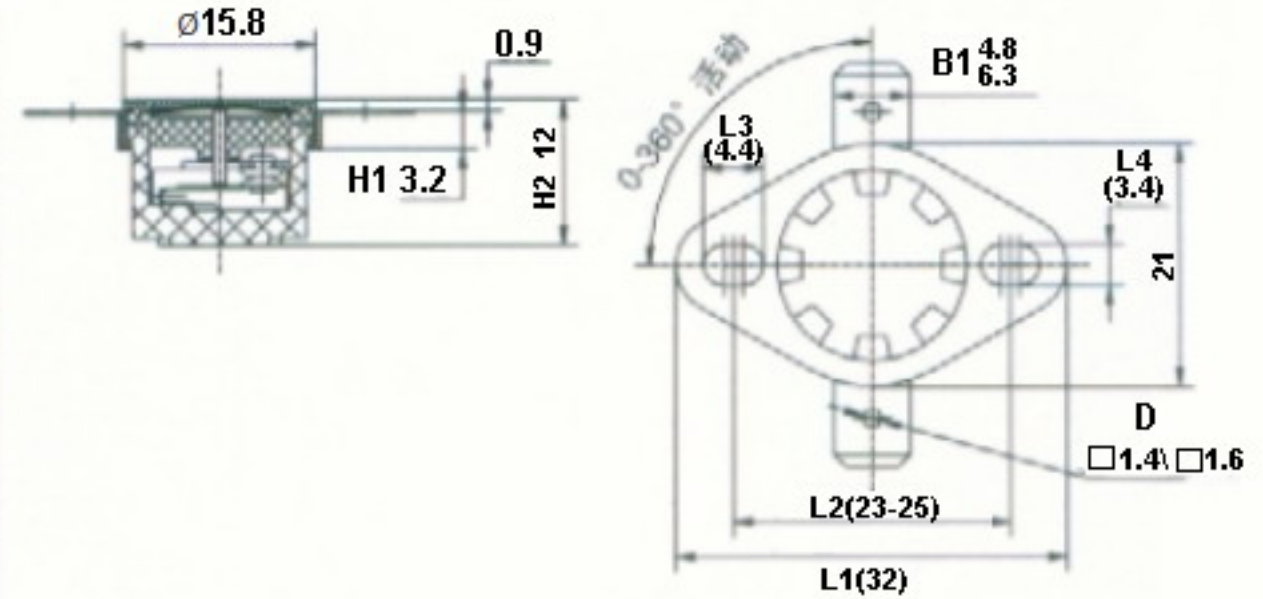
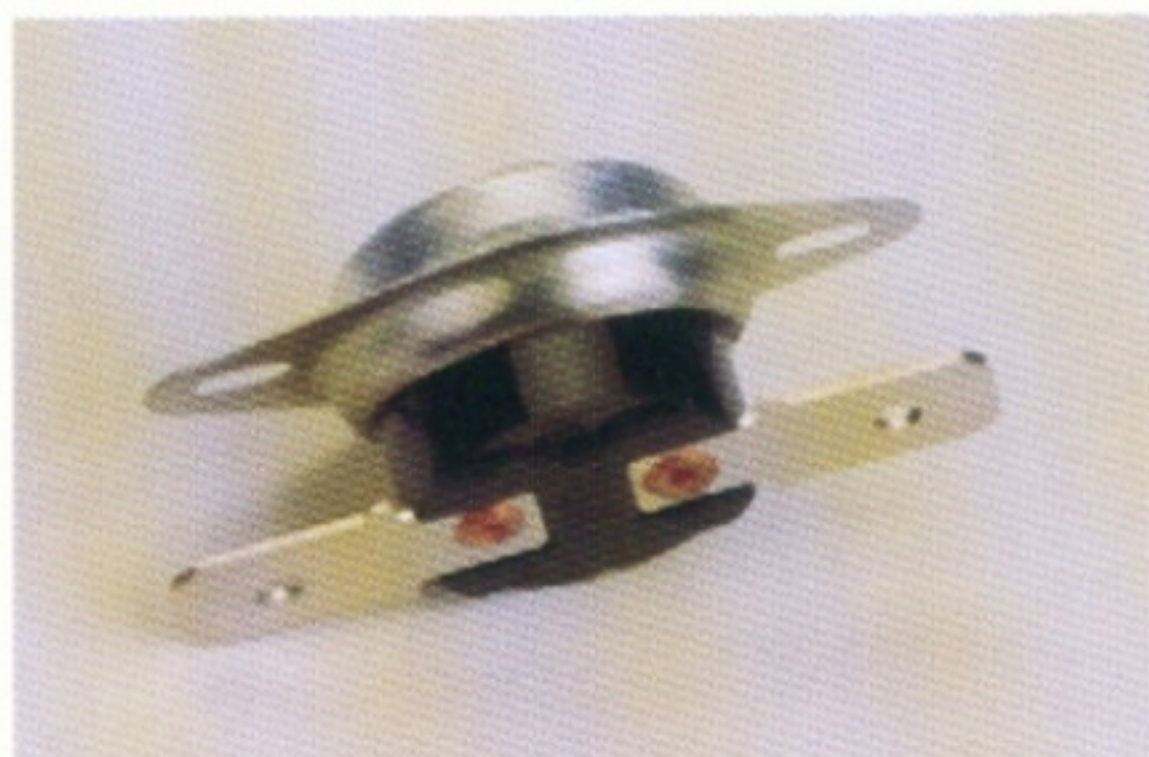
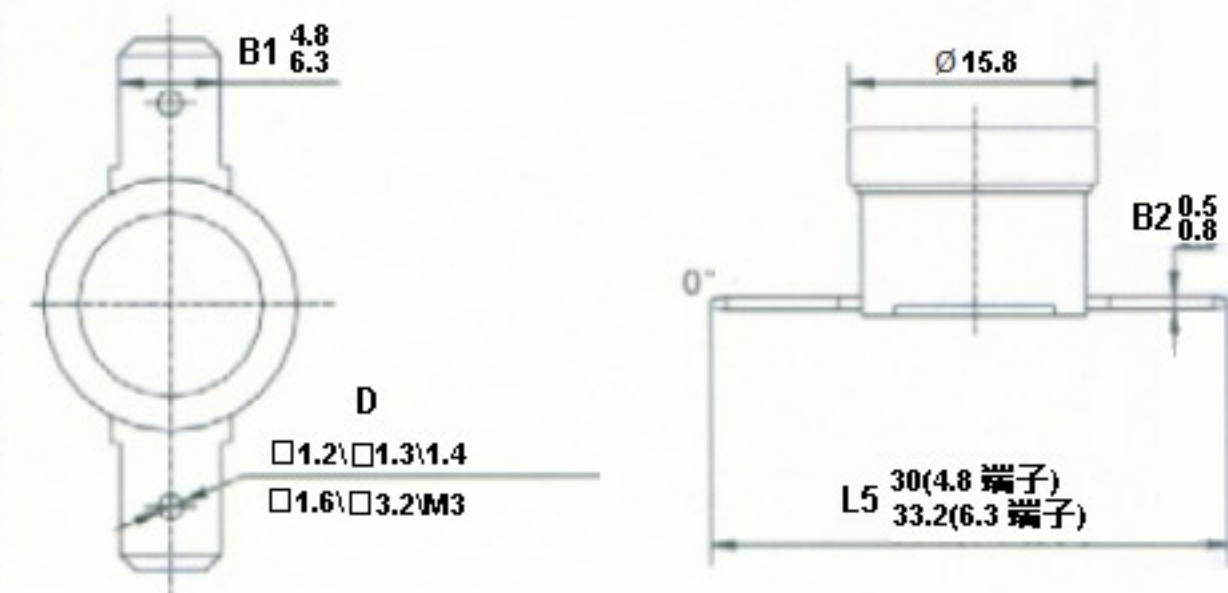
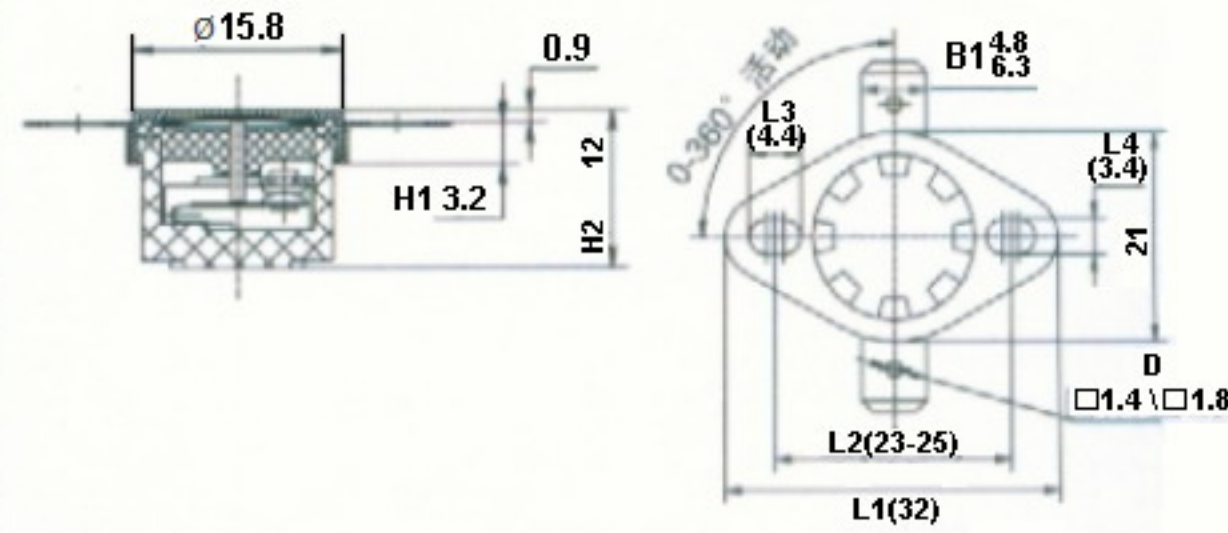
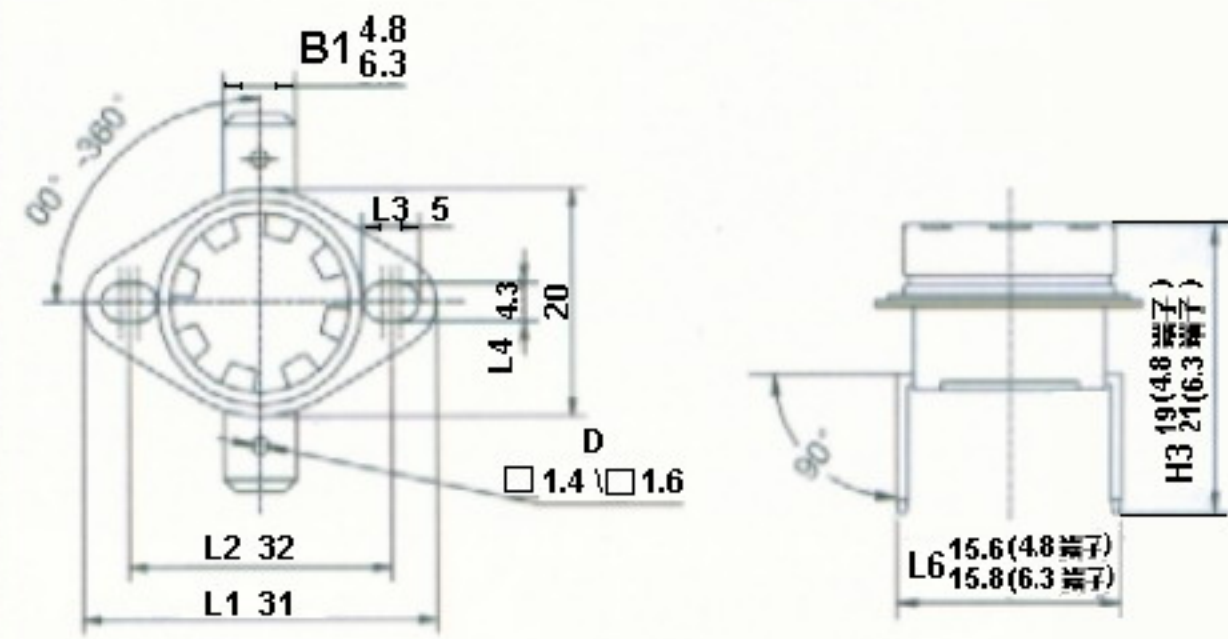
- M : 手動復歸

M : Manual Rest

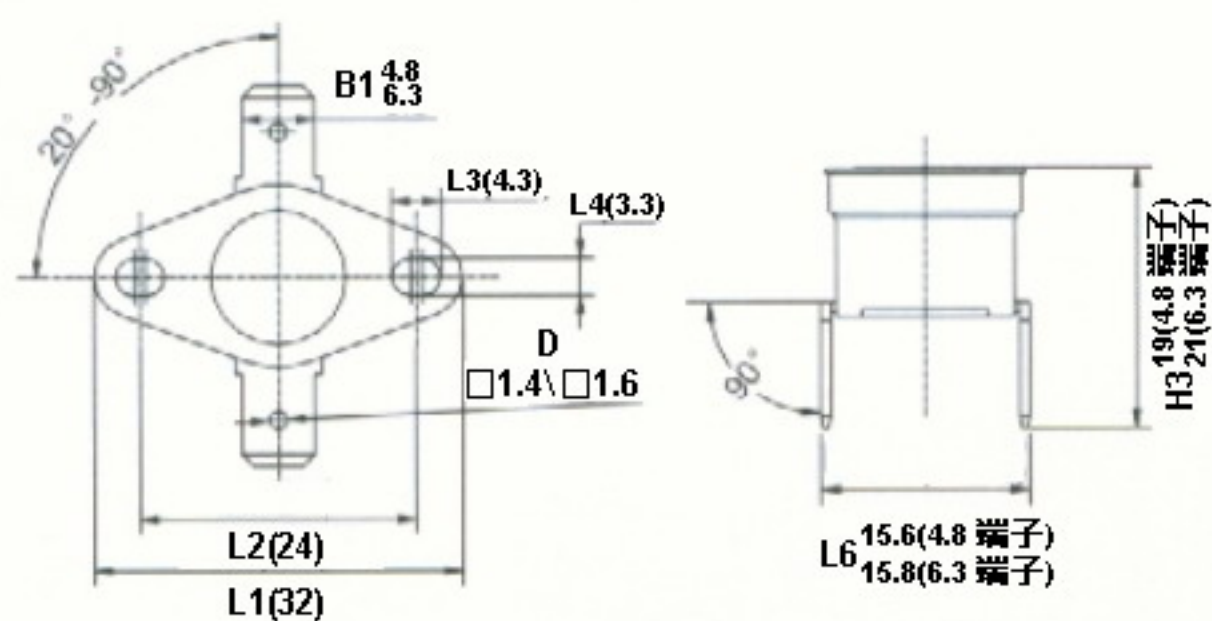
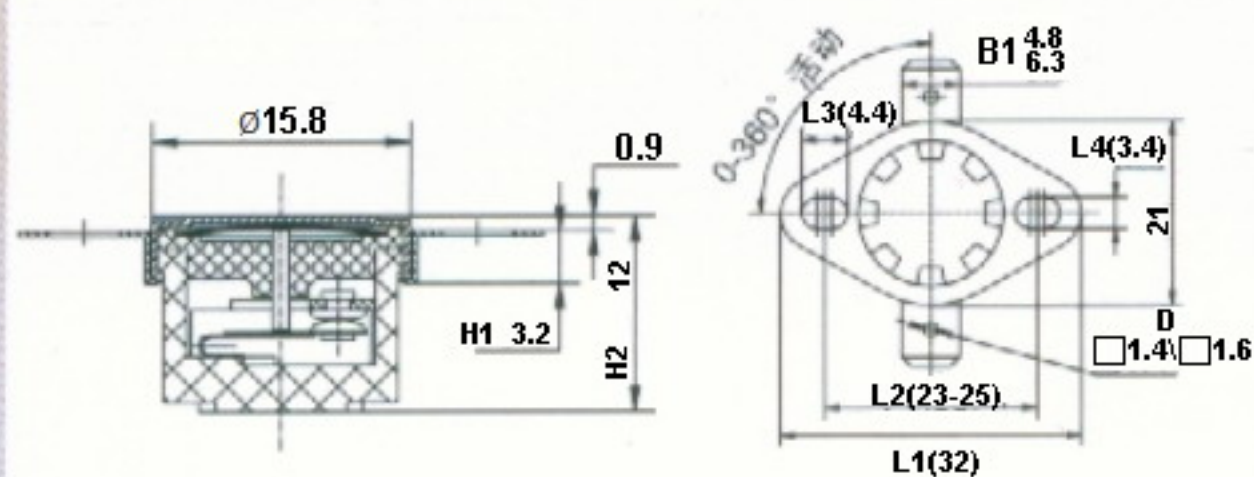
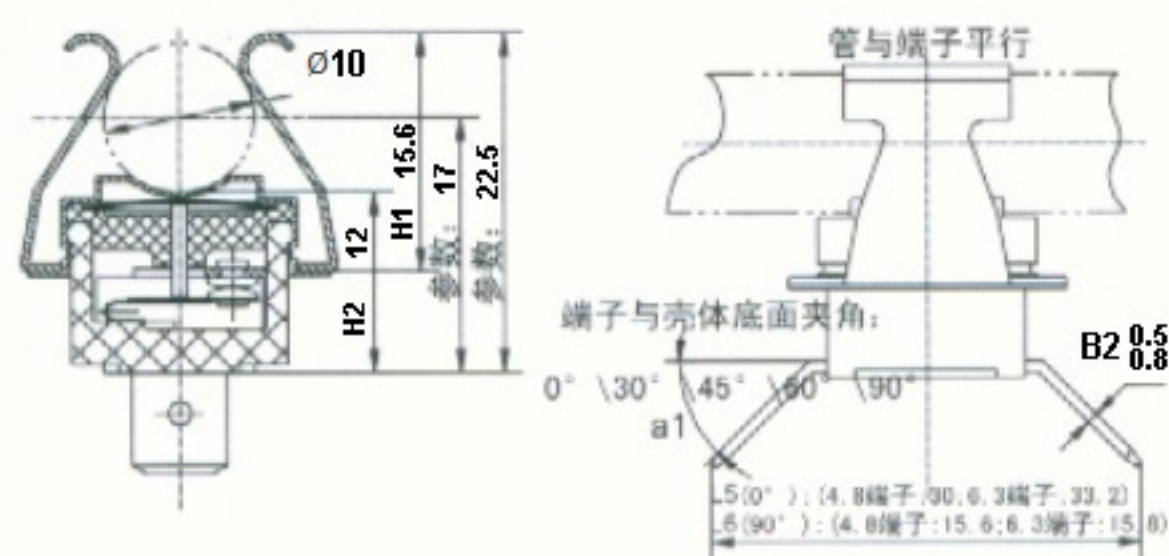
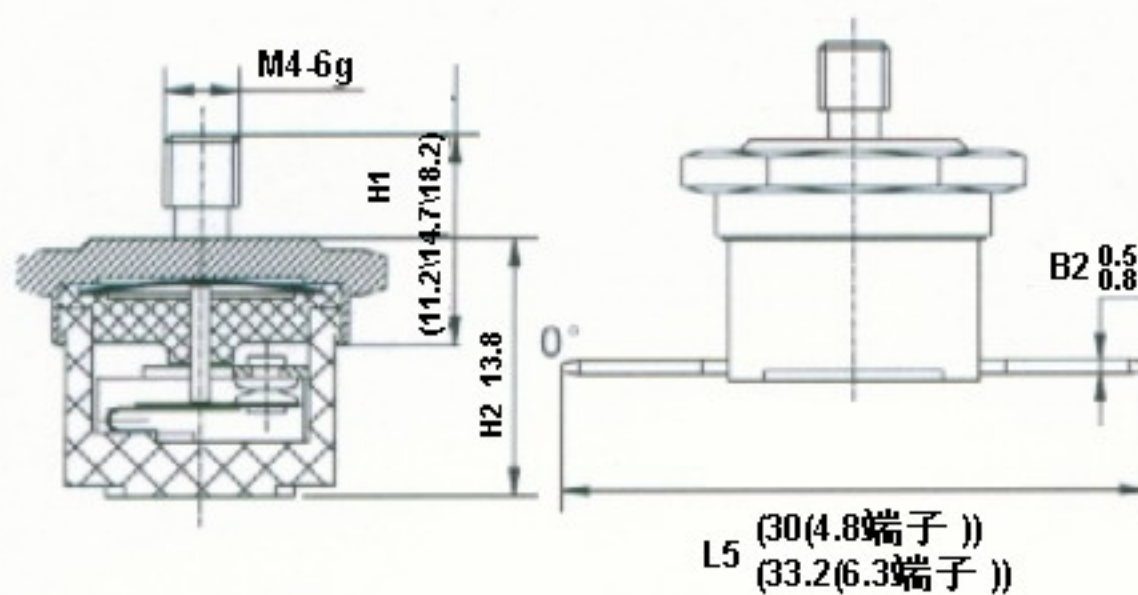
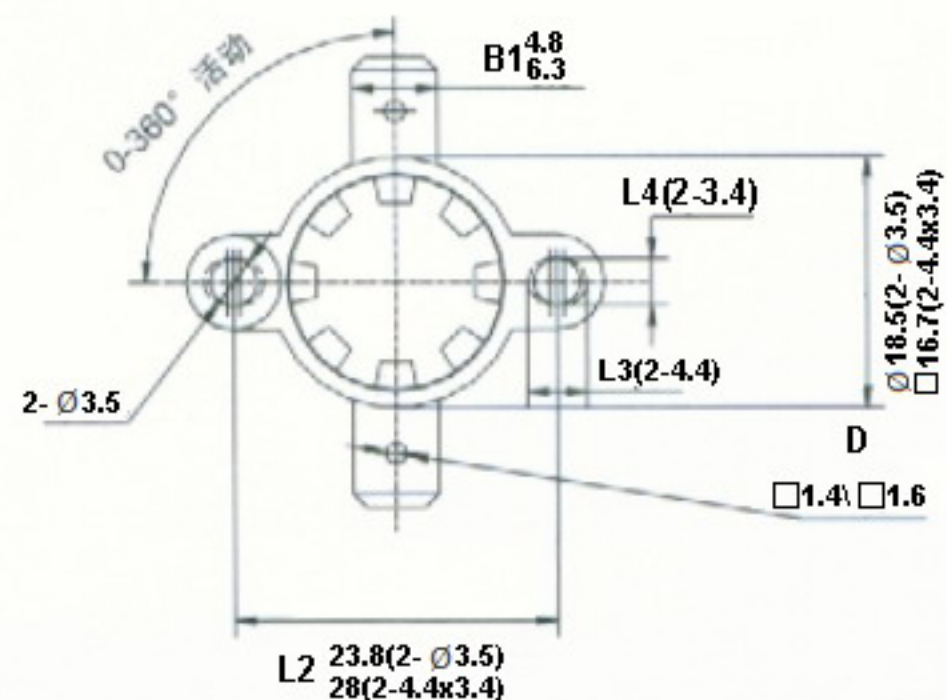
B7. 絕緣材料 (Insulating Material)

- 1 - 電木 (PF)
- 2 - 電子陶瓷 (Electronic Ceramic)

D.尺寸圖 (Measurement)



D.尺寸圖 (Measurement)



H2/11K/ ~ B3-1-H2



H2/11K/ ~ A1



H2/11/ ~ A2



H2/33/ ~ G

