



4A-BF2

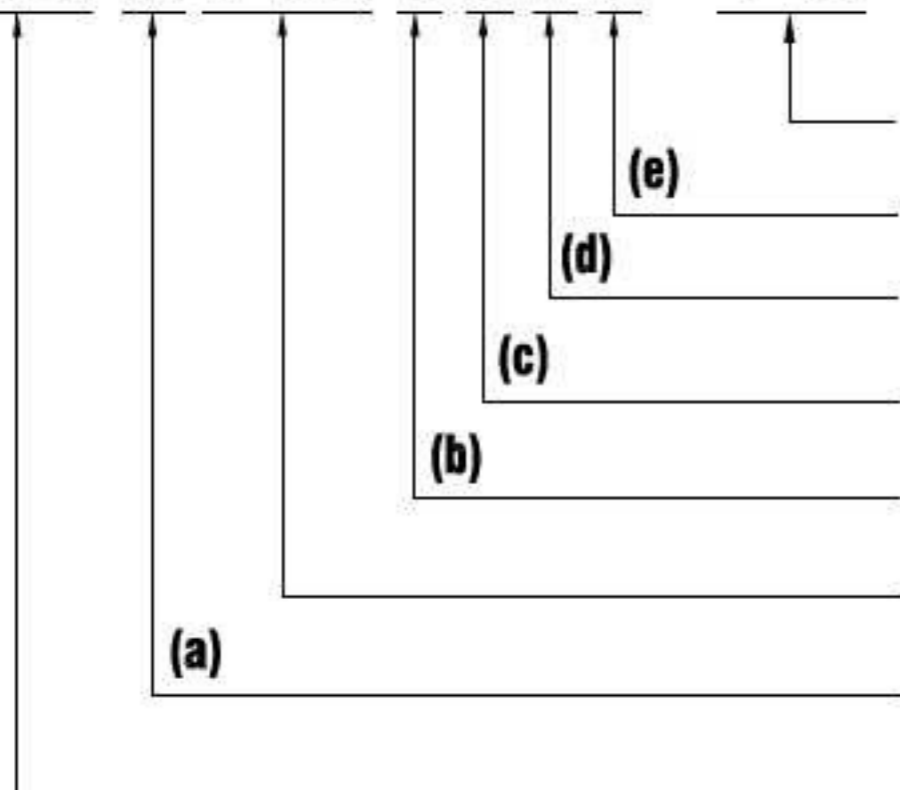
SPECIFICATION

- Electrical Rating : 15A 125V AC (Resistive Load)
10A 250V AC (Resistive Load)
16A 250V AC(Resistive Load)
- Operating Temp : 50 ~ 175°C (UL.CUL 205°C)
- Differential : 10~30K (15K Standard)
- Temp. Tolerance : Operating Temp.±3K±5K
- Heat Durability : 220°C Max.(PPS)
- Circuit Resistance : 50mΩ Max.
- Insulation Resistance : 100MΩ Min.at DC 500V
- Dielectric Strength : AC 1000V for One Minute.
or AC 1800V for One Second.
- Operating Life : 100000 Cycles (15A 125V/10A 250V AC)
10000 Cycles (16A 250V AC)
- Weight:5.2g max.

HOW TO ORDER

MODEL CODE (FULL CODE)

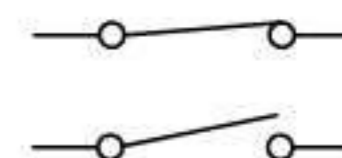
T24 A110 B B F 2 - 1 5



- Differential**
- Terminal Size**----- Please Refer Fig.(e)
- Terminal Orientation**---Please Refer Fig.(d)
- Bracket Type**----- Please Refer Fig.(c)
- Temp. Tolerance**----- Please Refer Fig.(b)
- Operating Temp**
- Contact Type**----- Please Refer Fig.(a)
- Model**

(a) CONTACT TYPE :

- A = Contact Opens When Temperature Rises to Set Point (Normally Closed)
- B = Contact Closes When Temperature Rises to Set Point (Normally Open)
- M = Manual Reset



(b) TEMP. TOLERANCE : (*=STANDARD)

Grade	A	*B
Action ± °C	3	5
Reset ± °C	4	8

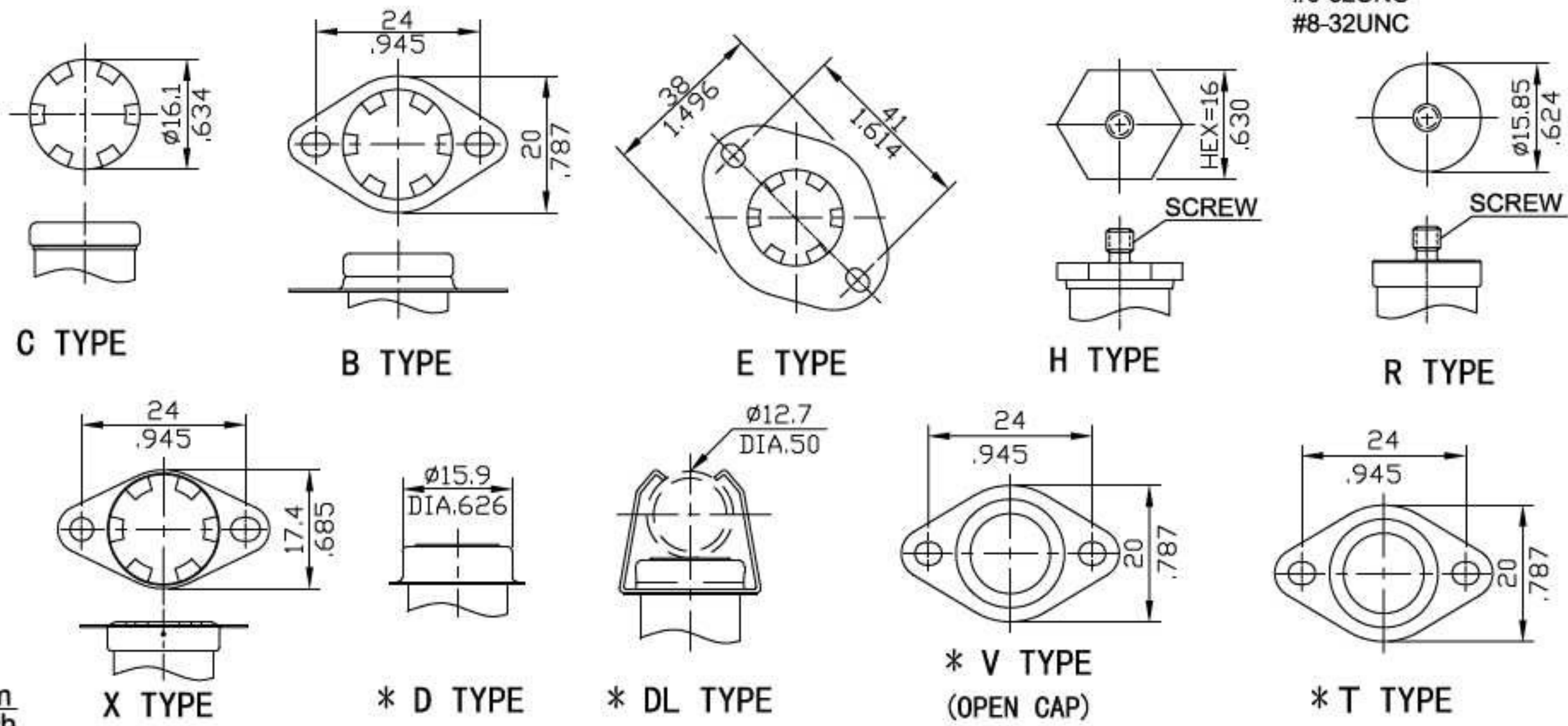
- The Grade of Temp. Tolerance is "A", When The Operating Temp. is Less Than 105°C.
- The Grade of Temp. Tolerance is "B", When The Operating Temp. is Over 106°C.

(c) BRACKET TYPE :

• FIXED BRACKET

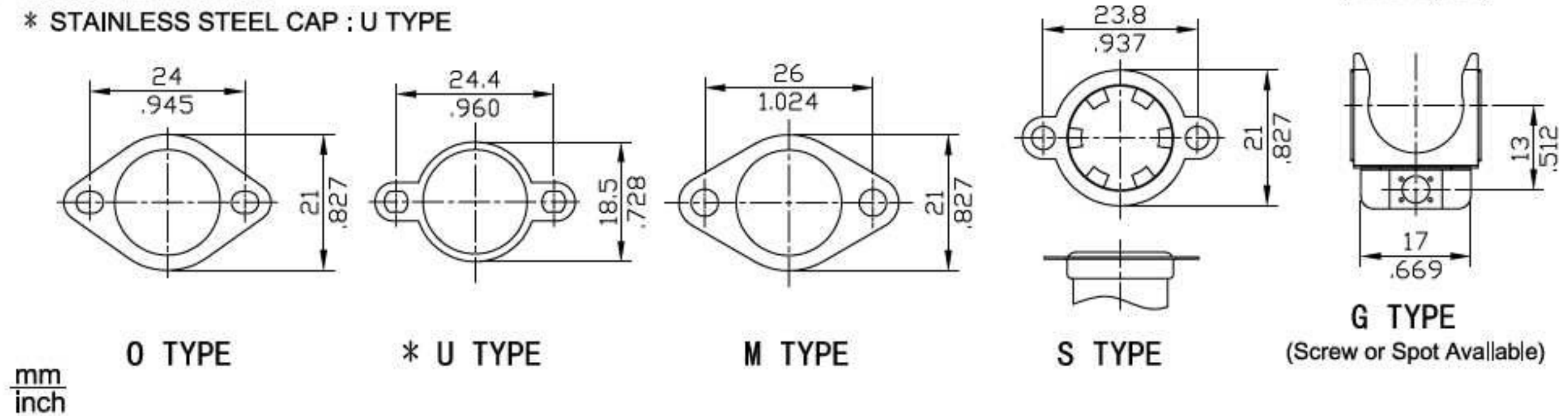
* STAINLESS STEEL CAP : D,DL,V,T TYPE

SCREW TYPE : M4x0.7 L:6mm (STD)
M5x0.8 L:6mm (STD)
#6-32UNC
#8-32UNC

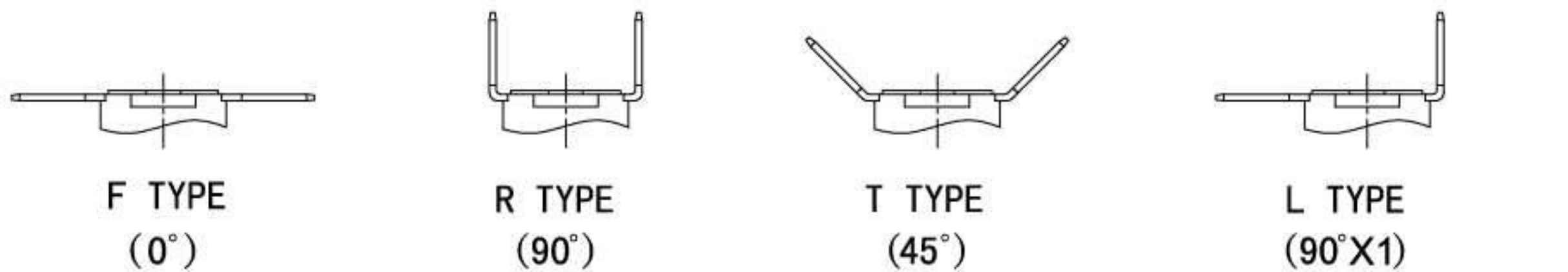


• LOOSE BRACKET

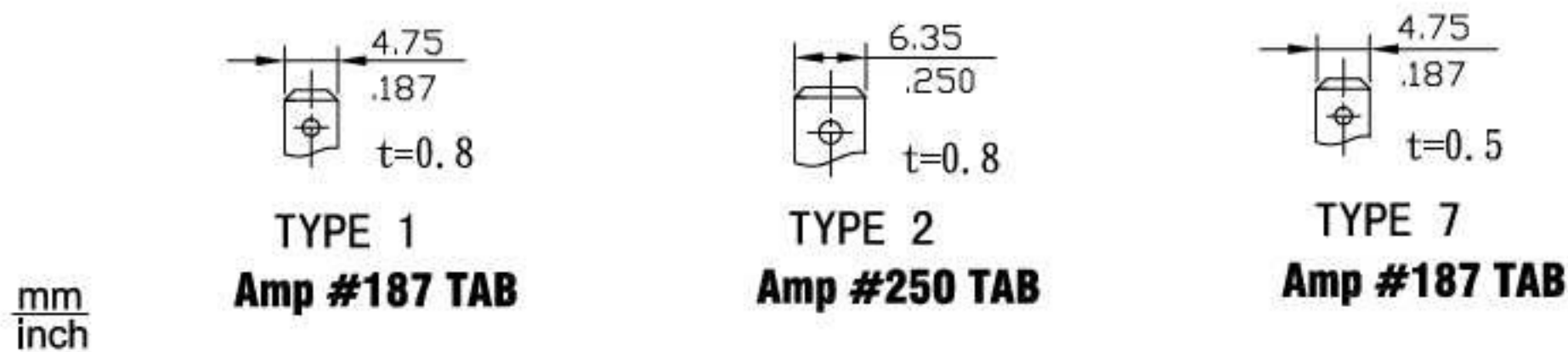
* STAINLESS STEEL CAP : U TYPE



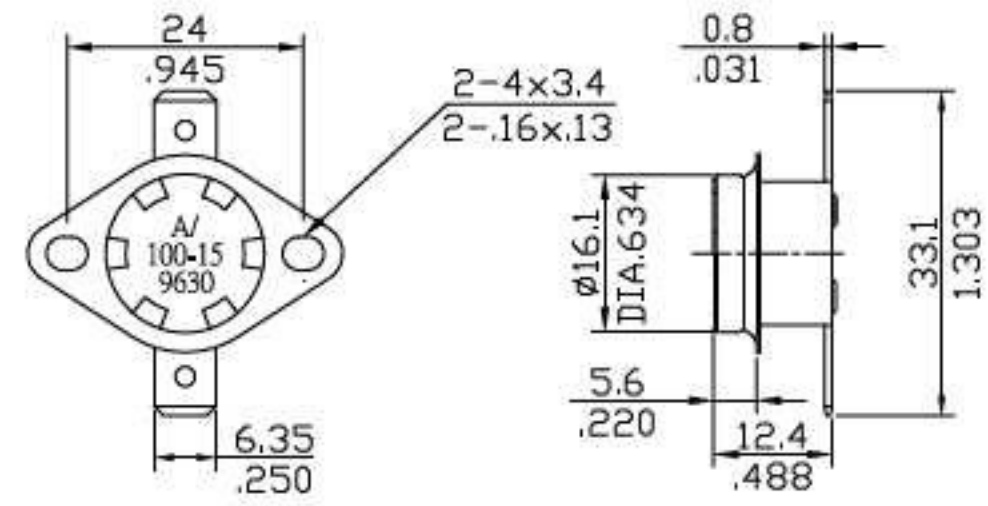
(d) TERMINAL ORIENTATION:



(e) TERMINAL SIZE:

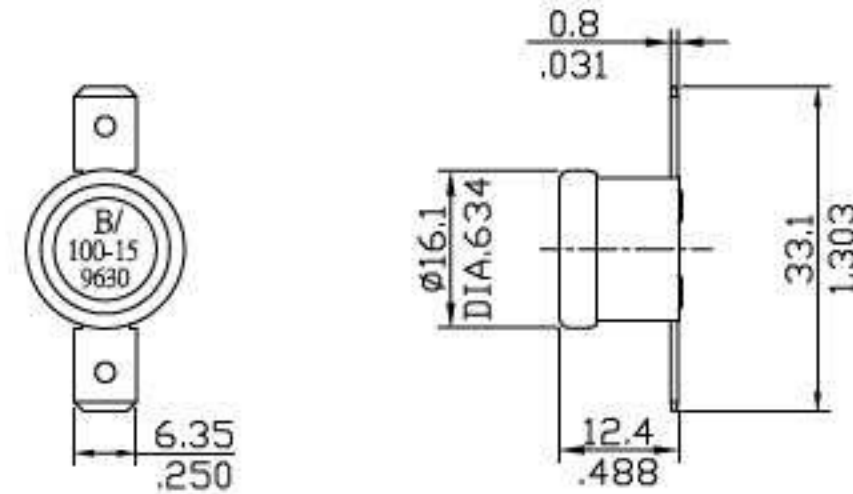


4A-BF2



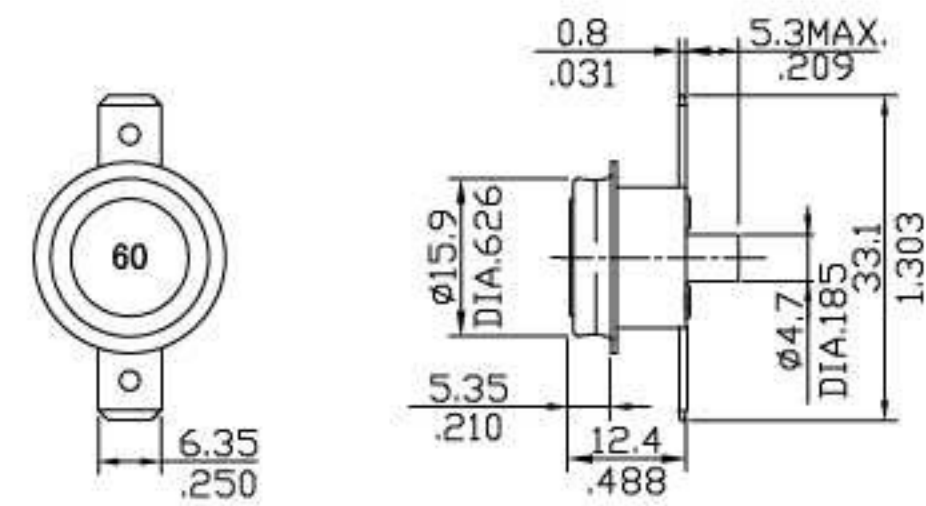
mm
inch

4B-CF2



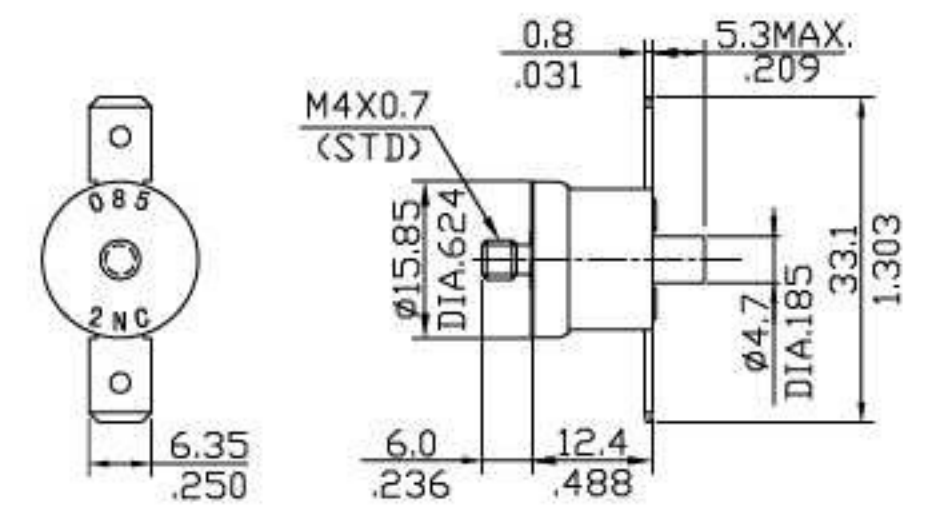
mm
inch

4M-DF2



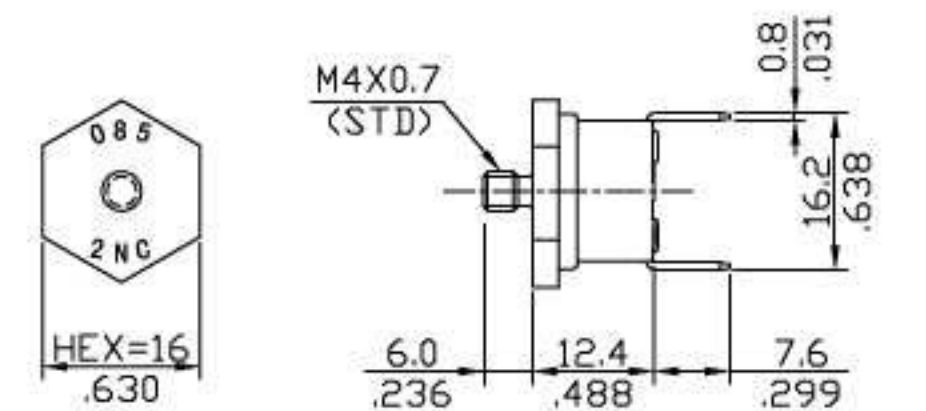
mm
inch

4M-RF2



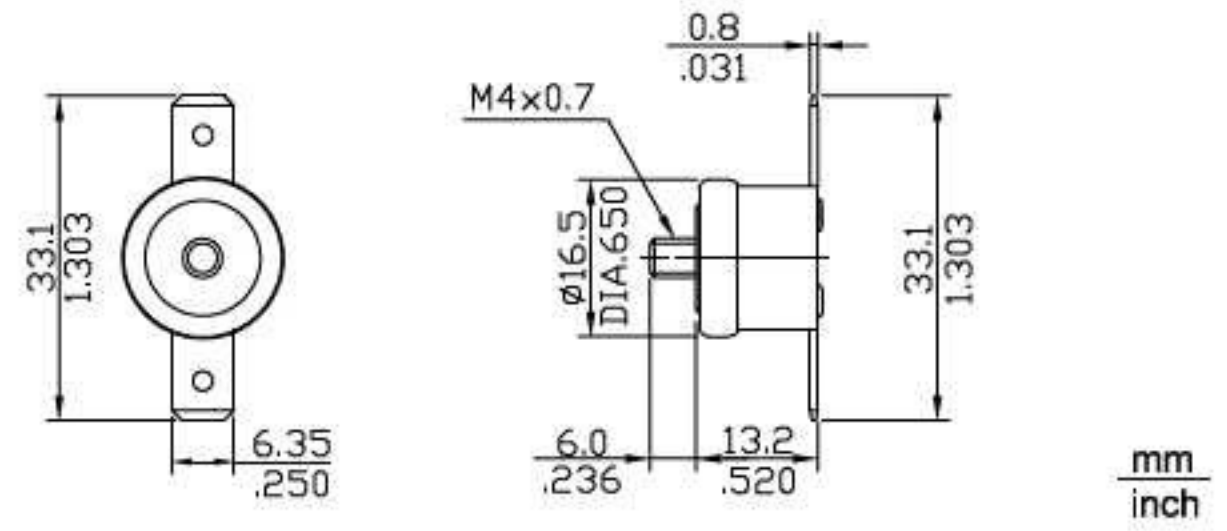
mm
inch

4A-HR1

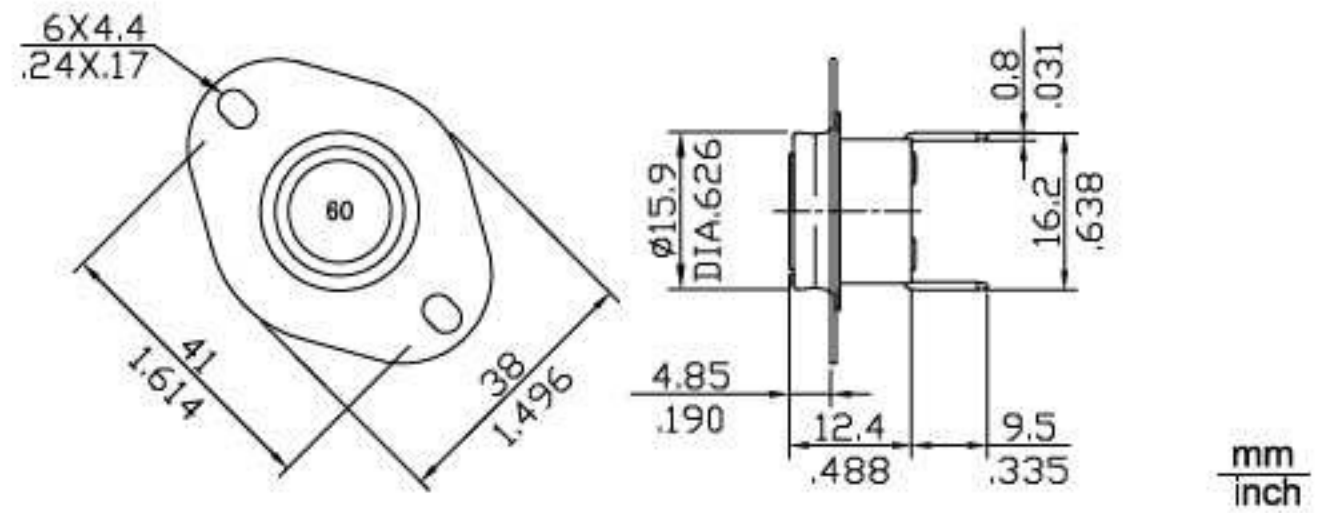


mm
inch

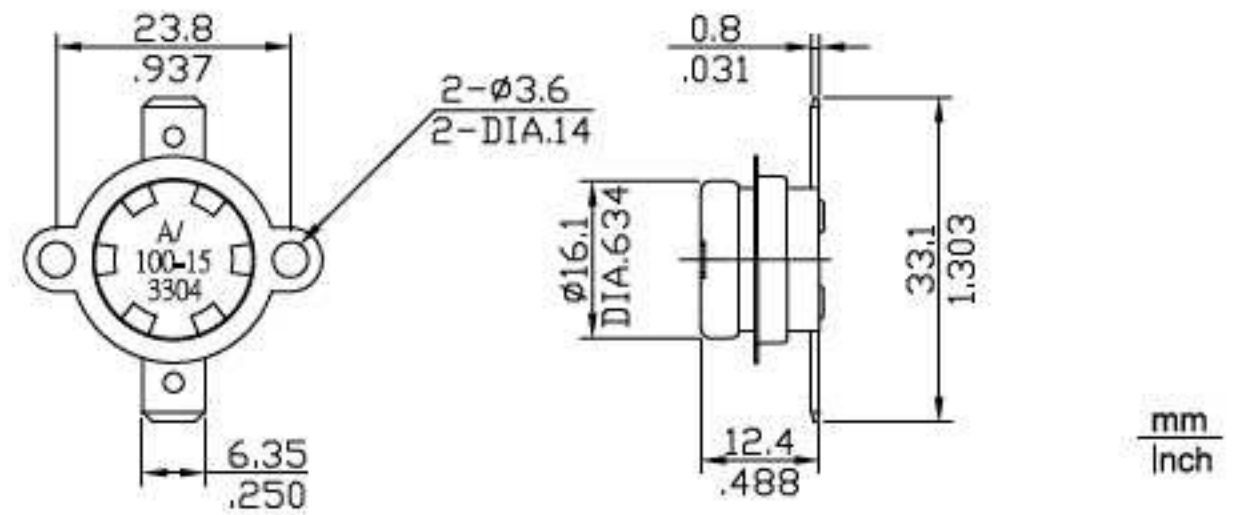
4A-RF2-A



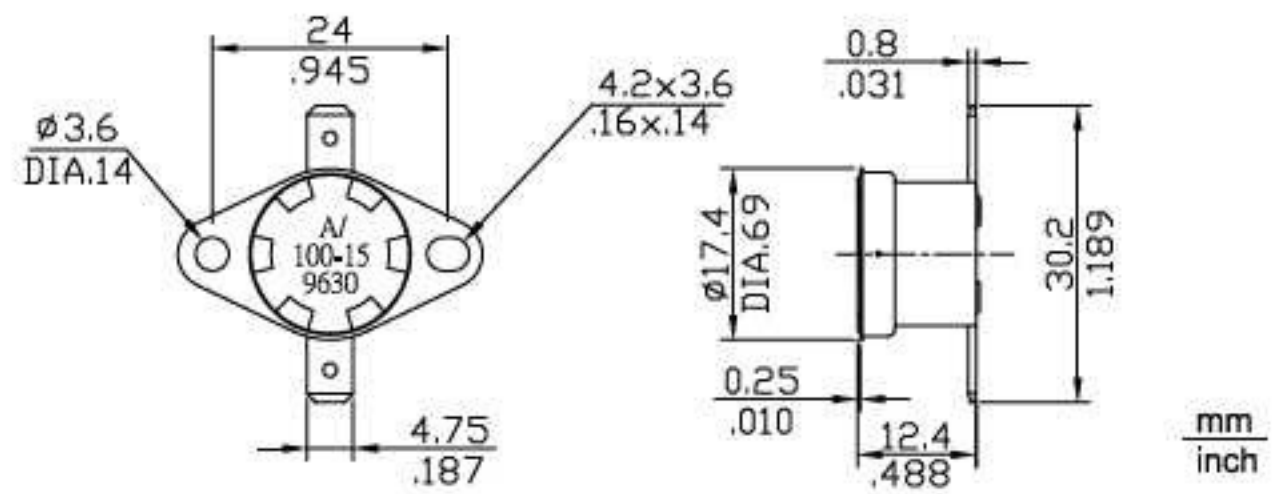
4A-DR2-E



4A-SF2 (LOOSE BRACKET)



4A-XF1 (FIX BRACKET)



4A-BF2-V (OPEN CAP)

